



**Experience the joy of new Home –crafted with care, built for modern living and ready to be the foundation of your lifelong memories.**

**SANJEEVANI HOMES**  
(G+4 Residential Builder Floor)  
(Plot size – 346.84 square yard)  
(Carpet area– 1715 square feet)  
(Super built up area– 1970 square feet)

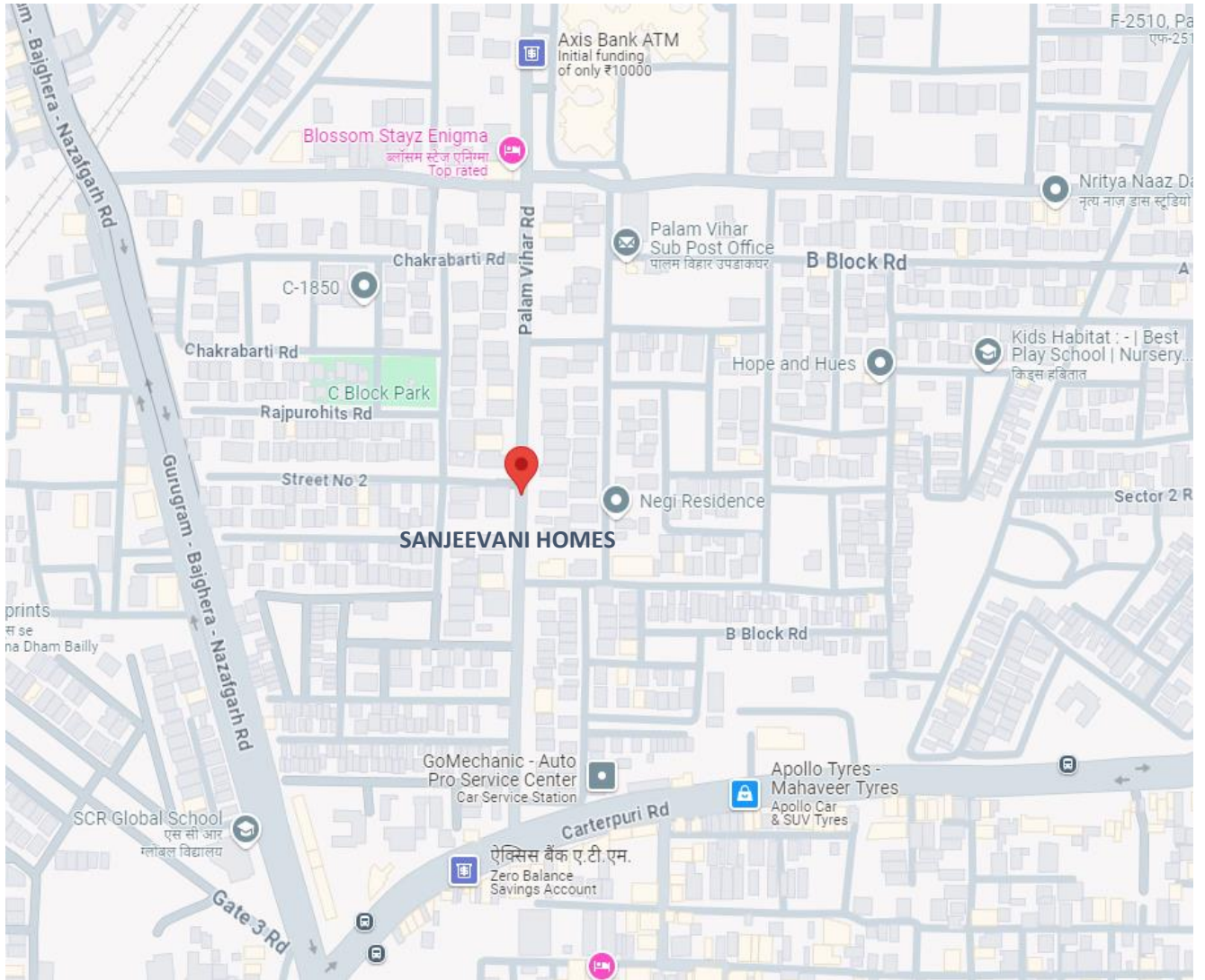


**KK DHANUKA ESTATES PVT LTD.**

Phone: +91 9205111505

E-Mail: [kdeplofficial@gmail.com](mailto:kdeplofficial@gmail.com)

Close to all things important  
Close to your heart



Click on the link for location

<https://maps.app.goo.gl/4Eyv48kRPjM7sMEc6>

# Close proximity

## **Educational ( School & College )**

- Presidium School, Palam Less than 1.0 Km
- Shiksha Bharti School Free Education Less than 1.0 Km
- Apple Blossom School 1.1 Km
- New Cambridge Public School 2.8 Km
- The Northcap University 2.6 Km
- RR College Gurgaon 2.5 Km

## **Health Care**

- Newlife Multispeciality Hospital and Trauma Centre Less Than 1.0 Km
- Park hospital Palam Vihar 1.7 Km
- Columbia Asia Hospital 1.8 Km

## **Entertainment & Amusement**

- Palam Vyapaar Kendra Less Than 1.0 Km
- Global Foyer Mall 1.9 Km
- Kid's Play Park 1.0 Km
- Park A Block Palam Vihar 1.0 Km
- Tau Devilal Park 1.3 Km

## **CBD**

- Krishna Chowk Palam vihar Less than 1.0 Km
- Palam Vihar Bus stop 1.3 Km
- Dwarka Expressway 6.3 Km
- Gurgaon Railway Station 4.0 Km

# Quality Construction for Quality Living

## COMMON AMENITIES

- Wall decorated lobby.
- Under and over head water storage facility for each floor and automatic pumping system.
- Guard room and common toilet
- Provision for cable TV and broadband infrastructure
- LED illumination for compound
- Necessary Illumination in all parking staircases.
- Pillar less parking area for more parking space
- Main gate, wicket gate and staircase railing of stainless steel 304 grade.

## COMMON AREAS

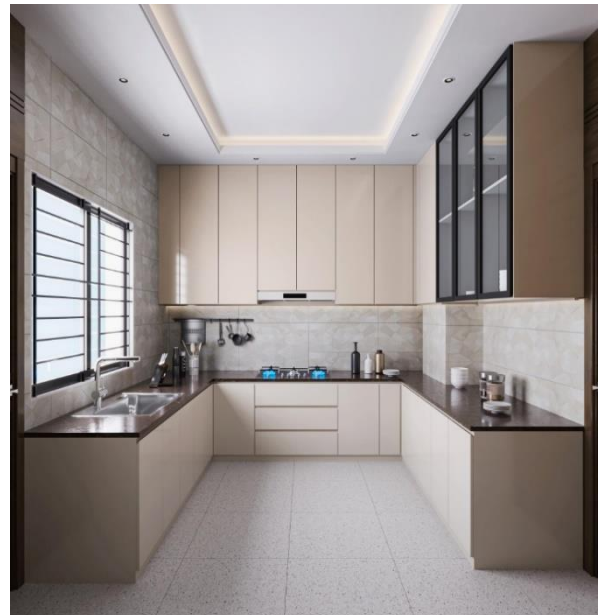
- 6 Passenger Auto Lift of **Schindler**.
- Water proof with latest non-fading exterior finish
- Underground covered water drainage system.
- Complementary pre-interior designed concept.

## KITCHEN

- Italian marble flooring
- Stainless steel sink make JAYNA
- Processed marble of kitchen counter upto 2 feet above the counter.
- Sufficient power point for Electrical Fixtures.
- Modular Kitchen (Annotech System) of **Godrej** along with hob and chimney of **Kaff**.

## TOILET

- Italian marble floors.
- Dado of designed RAK Ceramic wall tiles up to ceiling
- White Sanitary ware and all taps, shower, diverters are of **KOHLER**.
- Geyser, Exhaust Fan installed of branded make **HAVELLS**
- Plumbing lines of CPVC, UPVC pipes of Supreme industries.



## STRUCTURE

- Earthquake resistant RCC framed structure with premium quality steel manufactured by TATA Steel & premium cement by Ultratech.
- Conventional Grade-I bricks for external & internal wall.

## WALL FINISH

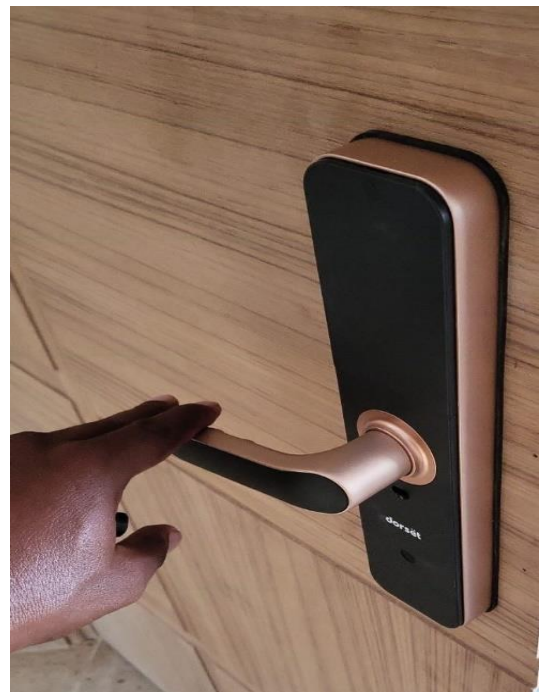
- POP Plaster for inside wall & POP ceiling.
- Interior wall colour & ceiling with Asian Paint Tractor Emersion Shine.
- Exterior-High quality water proof, texture paint/ Apex(Asian Paint).

## ELECTRICALS

- Modular switches of Norisys make and polycab wiring in all bedrooms, Living/Dining, Kitchen and Toilets.
- Provision and providing of VRV AC system in all room and for Living/ Dining Daikin make.
- DTH/ Optical Fiber Cable provision in living /dining.

## ADVANCE SECURITY SYSTEM

- Installation of digital securities cameras (front and back side balcony, common main door and staircase and parking area)
- Video door bell (Panasonic)for each floor.





## Embrace peace in your moments of relaxation

### **DOORS & WINDOWS :**

- Teak wood doors frame (Ivory teak)
- Solid core ISI water proof flush door of Century make.
- Teak wood entrance door with digital lock of door set.
- Internal rooms-fitting with dorset cylindrical lock, handle, tower bolt.
- Flush Door with lamination for toilets
- UPVC elevation door(DG Glasses) and windows of branded make

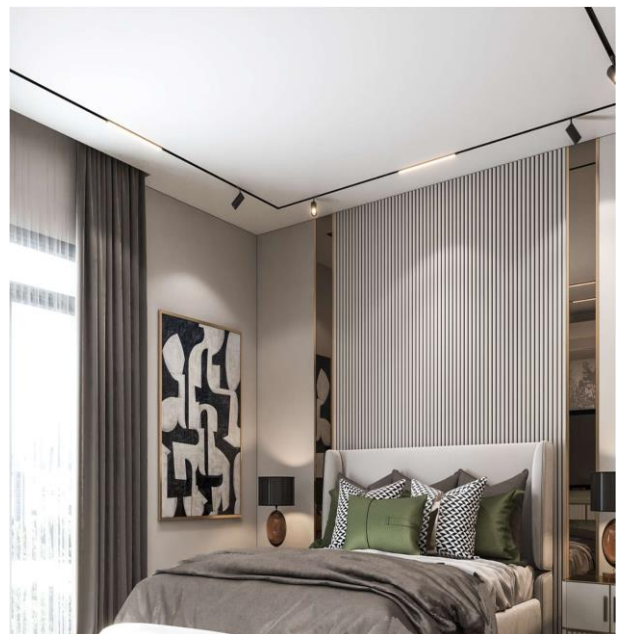
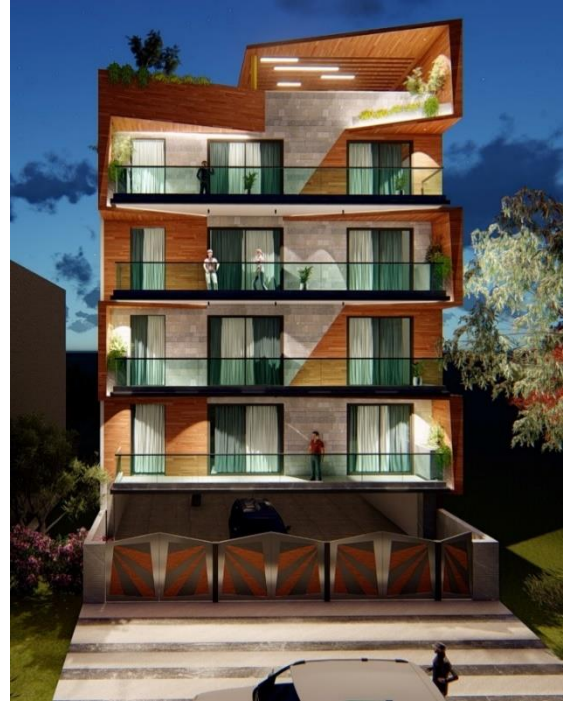
### **FLOORING: Italian Marble Flooring**

- Internal Flooring: Italian marble, Bedrooms, Living & Dining, Lobby, Kitchen and toilet area.
- Common area Flooring: Granite flooring

**“Move into a home that’s more than just a house – it’s a sanctuary of style, innovation, and comfort waiting to embrace your story.”**

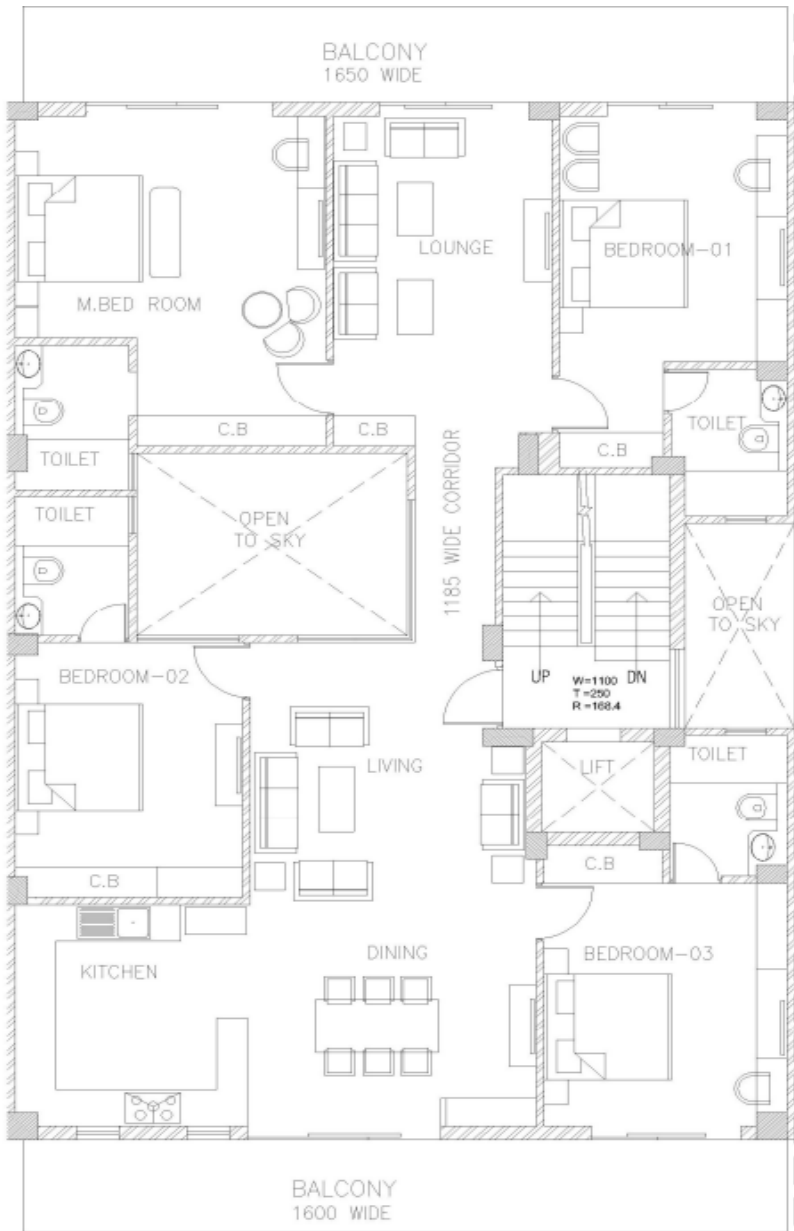


We understand that you are looking for the perfect home for your family. That is why we work with the most skilful Architect, Engineers and Vastu Consultant all experienced professional in the field to ensure that the quality of your future home is not compromised.





# Individual Floor Plan



1. Living +P. Room
2. Dining
3. Mandir
4. Drawing Room
5. Kitchen
6. M.bedroom + Toilet
7. Bedroom01+Toilet
8. Bedroom02+Toilet
9. Bedroom03+Toilet
10. Balconies



Property Owners :  
**K K Dhanuka Estate Pvt. Ltd.**



## SANJEEVANI HOMES

(G+4 Residential Builder Floor)

(Plot size – 346.84 square yard)

(super area – 1970 square feet)

For Booking & Queries, Contact No. **9205111505(Puja Kumari)**



KK DHANUKA ESTATES PVT LTD.

Unit No. 312-2, 3rd Floor,

Suncity Trade Tower, Sector - 21,

Gurugram, Haryana - 122017.

Phone: +91 9205111505

E-Mail: [kdeplofficial@gmail.com](mailto:kdeplofficial@gmail.com)

Disclaimer:- All plans, drawings, amenities, features, specifications other information etc. mentioned are indicative of the kind of development that is proposed and are subject to the approval of the respective authorities. The picture, wall, roadways, landscape, perspective view of building, model furnished apartments and maps are the artist's conception of the actual project. The developers reserve the right to make changes or alteration at their sole discretion without prior notice or obligation in the interest of the project.